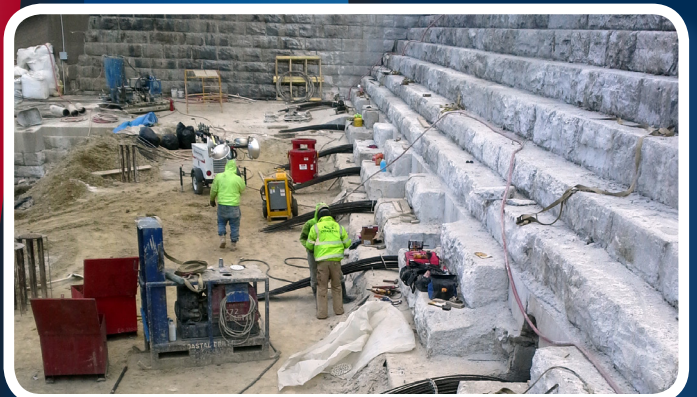
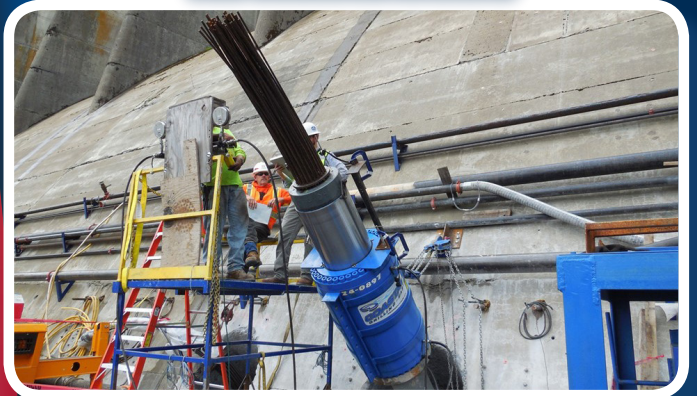




COASTAL
DRILLING EAST

Ground Treatment, Ground Reinforcement And Structural Support Technologies

- Soil Stabilization • Structural Underpinning
- Increased Foundation Loading
- Infrastructure Upgrade • Excavation Support
- Foundation Upgrade For Large Manufacturing Plants
And Commercial Structures



CoastalDrillingEast.com

Geotechnical Construction

Micropiles

- Deep Foundation Elements
- Challenging And Complex Subsurface Conditions
- Difficult Or Restricted Access/Low Overhead
- Full Range Of Capacities In:
 - Compression / Tension / Lateral

Friction Piles

- High Capacities
- Minimum Vibration, Ideal For Close Proximity To Structures
- Minimum Spoils , Ideal For Contaminated Soils

Directional Drilling

- Real-Time Optical Guidance & Verification Techniques
- Precision Drilling With Deviations Less Than 1 Inch At 550 Feet
- Vertical And Angled Applications

Grout Stabilization

- Compaction / Low Mobility / Curtain / High Mobility Grouting
- Mine Grouting / Polyurethane Resin Grouting

Anchors

- High Capacity
- Soil
- Tieback / Tie-Down
- Pressure Grouted

Shoring Systems

- Lagging
- Soil Nails
- Shotcrete/Gunite
- Rock Fall Mesh

Quality Assurance

- Complete Load Testing Capabilities
 - Tension / Compression / Lateral
- Documentation And Reporting
- Materials
 - Strength Testing / Grout Mix Designs / Third Party Certification



Subsurface conditions can vary greatly, sometimes within the same construction site. Coastal Drilling East, LLC provides solution using the best available ground treatment, ground reinforcement, and structural support technologies. Our team works closely with engineers, contractors, and owners to ensure best value of time, money and quality while maintaining schedule and minimizes impact on normal facility operations.



COASTAL
DRILLING EAST

Coastal Drilling East delivers the most innovative solutions for our clients. Please contact us for any of your geotechnical construction needs.

Bid Coordinator

P: 800.331.0175 | 304.291.0175

E: geobid@shaftdrillers.com

130 Meadow Ridge Road, Suite 24
Mt. Morris, PA 15349

CoastalDrillingEast.com

